

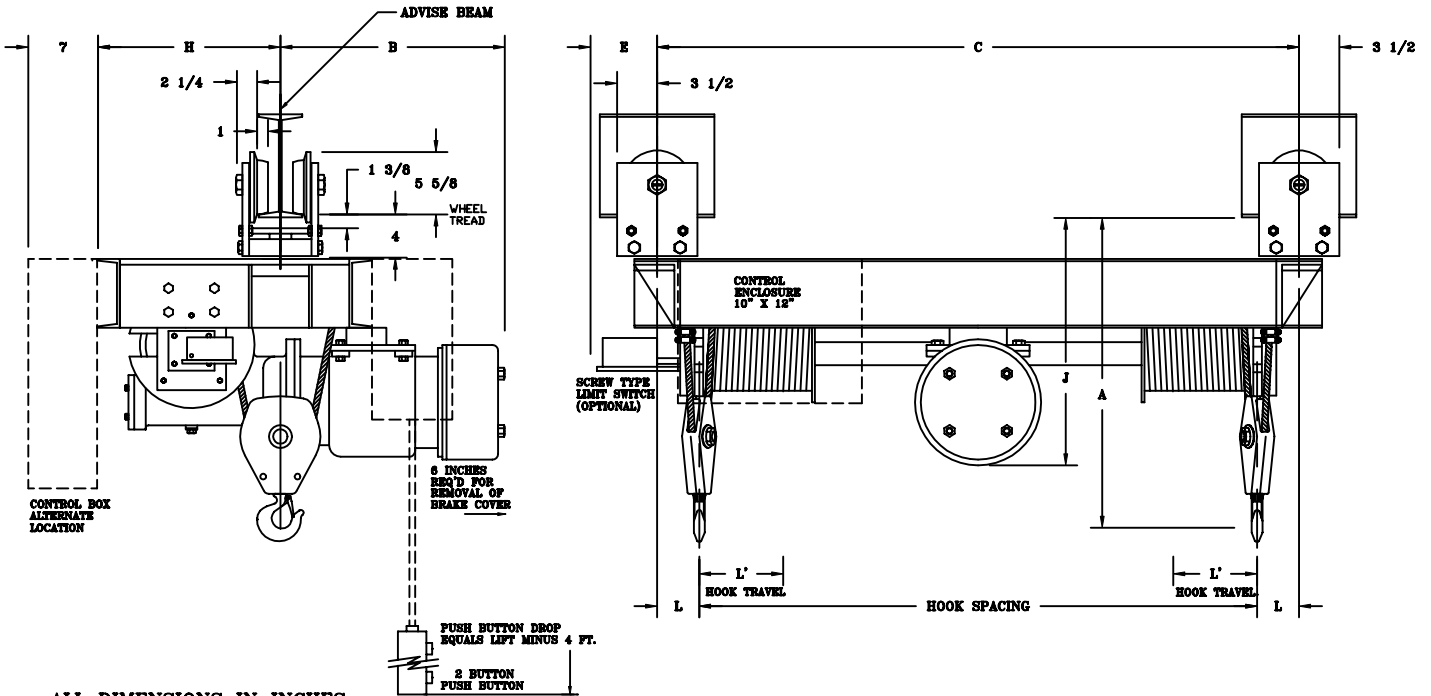
CHESTER HOIST

WORM DRIVE HOIST
DATA SHEET E-33AS

CAPACITY 1-1 1/2-2-3 TON

STANDARD HEADROOM
PLAIN TROLLEY TYPE-R & S

TWIN HOOK MONORAIL
2-PART SINGLE



ALL DIMENSIONS IN INCHES

MODEL NUMBER	CAPACITY (lbs.)	SPEED (Fpm)	LIFT (Ft.)	REEVING	MOTOR (hp)	A	B	C	E	H	J	L	L'	MAX. HOOK SPACING	MIN. HOOK SPACING	ST'D. I-BEAM SIZE CLEAR*	APPROX. WT. (lbs.)		
WDT-326S	2000	20	24	2PS-1/4	2 @ 1200	22	20 1/2	36 1/2	5 1/2	16	20 3/4	3 3/4	4 1/4	108	29	7-24	7/16	1000	R
WDT-327S	2000	20	45	2PS-1/4	2 @ 1200	22	20 1/2	49 1/2	5 1/2	16	20 3/4	3 3/4	7 1/2	108	42	7-24	7/16	1100	R
WDT-328S	2000	20	66	2PS-1/4	2 @ 1200	22	20 1/2	62 1/2	5 1/2	16	20 3/4	3 3/4	11	108	55	7-24	7/16	1200	R
WDT-320S	2000	30	24	2PS-1/4	3 @ 1800	22	20 1/2	36 1/2	5 1/2	16	20 3/4	3 3/4	4 1/4	108	29	7-24	7/16	1000	R
WDT-321S	2000	30	45	2PS-1/4	3 @ 1800	22	20 1/2	49 1/2	5 1/2	16	20 3/4	3 3/4	7 1/2	108	42	7-24	7/16	1100	R
WDT-322S	2000	30	66	2PS-1/4	3 @ 1800	22	20 1/2	62 1/2	5 1/2	16	20 3/4	3 3/4	11	108	55	7-24	7/16	1200	R
WDT-323S	2000	40	24	2PS-1/4	4 @ 1800	22	20 1/2	36 1/2	5 1/2	16	20 3/4	3 3/4	4 1/4	108	29	7-24	7/16	1000	R
WDT-324S	2000	40	45	2PS-1/4	4 @ 1800	22	20 1/2	49 1/2	5 1/2	16	20 3/4	3 3/4	7 1/2	108	42	7-24	7/16	1100	R
WDT-325S	2000	40	66	2PS-1/4	4 @ 1800	22	20 1/2	62 1/2	5 1/2	16	20 3/4	3 3/4	11	108	55	7-24	7/16	1200	R
WDT-330S	3000	20	24	2PS-1/4	3 @ 1200	22	20 1/2	36 1/2	5 1/2	16	20 3/4	3 3/4	4 1/4	108	29	7-24	7/16	1000	R
WDT-331S	3000	20	45	2PS-1/4	3 @ 1200	22	20 1/2	49 1/2	5 1/2	16	20 3/4	3 3/4	7 1/2	108	42	7-24	7/16	1100	R
WDT-332S	3000	20	66	2PS-1/4	3 @ 1200	22	20 1/2	62 1/2	5 1/2	16	20 3/4	3 3/4	11	108	55	7-24	7/16	1200	R
WDT-333S	3000	30	24	2PS-1/4	5 @ 1800	22	20 1/2	36 1/2	5 1/2	16	20 3/4	3 3/4	4 1/4	108	29	7-24	7/16	1000	R
WDT-334S	3000	30	45	2PS-1/4	5 @ 1800	22	20 1/2	49 1/2	5 1/2	16	20 3/4	3 3/4	7 1/2	108	42	7-24	7/16	1100	R
WDT-335S	3000	30	66	2PS-1/4	5 @ 1800	22	20 1/2	62 1/2	5 1/2	16	20 3/4	3 3/4	11	108	55	7-24	7/16	1200	R
WDT-336S	3000	40	24	2PS-1/4	6 @ 1800	22	23 1/2	36 1/2	5 1/2	16	20 3/4	3 3/4	4 1/4	108	29	7-24	7/16	1025	R
WDT-337S	3000	40	45	2PS-1/4	6 @ 1800	22	23 1/2	49 1/2	5 1/2	16	20 3/4	3 3/4	7 1/2	108	42	7-24	7/16	1125	R
WDT-338S	3000	40	66	2PS-1/4	6 @ 1800	22	23 1/2	62 1/2	5 1/2	16	20 3/4	3 3/4	11	108	55	7-24	7/16	1225	R
WDT-340S	4000	20	20	2PS-1/4	4 @ 1200	26	23 1/4	39	5 1/4	16 1/2	23 3/8	4	4 1/4	96	31	7-24	7/16	1050	S
WDT-341S	4000	20	40	2PS-1/4	4 @ 1200	26	23 1/4	52	5 1/4	16 1/2	23 3/8	4	7 1/2	96	44	7-24	7/16	1150	S
WDT-342S	4000	20	60	2PS-1/4	4 @ 1200	26	23 1/4	65	5 1/4	16 1/2	23 3/8	4	11	96	57	7-24	7/16	1250	S
WDT-343S	4000	30	20	2PS-1/4	6 @ 1800	26	23 1/4	39	5 1/4	16 1/2	23 3/8	4	4 1/4	96	31	7-24	7/16	1050	S
WDT-344S	4000	30	40	2PS-1/4	6 @ 1800	26	23 1/4	52	5 1/4	16 1/2	23 3/8	4	7 1/2	96	44	7-24	7/16	1150	S
WDT-345S	4000	30	60	2PS-1/4	6 @ 1800	26	23 1/4	65	5 1/4	16 1/2	23 3/8	4	11	96	57	7-24	7/16	1250	S
WDT-360S	6000	20	20	2PS-5/16	6 @ 1200	31	23 1/4	39	5 1/4	16 1/2	23 3/8	4	4 1/4	96	31	7-24	7/16	1050	S
WDT-361S	6000	20	40	2PS-5/16	6 @ 1200	31	23 1/4	52	5 1/4	16 1/2	23 3/8	4	7 1/2	96	44	7-24	7/16	1150	S
WDT-362S	6000	20	60	2PS-5/16	6 @ 1200	31	23 1/4	65	5 1/4	16 1/2	23 3/8	4	11	96	57	7-24	7/16	1250	S

* CLEARANCE BASED ON MAX. "S" BEAM SIZE 24" @ 121 LBS.
TROLLEYS FOR OTHER I-BEAMS AND PATENTED TRACKS ARE AVAILABLE.
"C" DIMENSION AND WEIGHTS BASED ON MIN. HOOK SPACING
NOTE: WHEN USING SCREW TYPE LIMIT SWITCH ADD 1 INCH TO HEADROOM.