

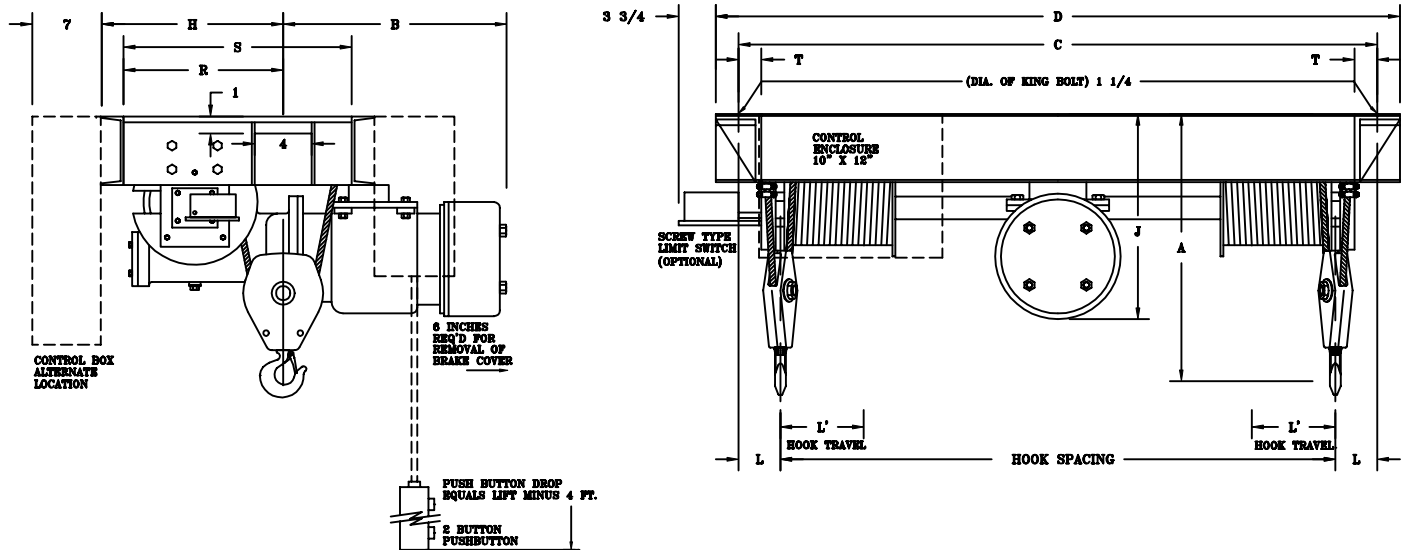
CHESTER HOIST

WORM DRIVE HOIST
DATA SHEET E-31AS

CAPACITY 1-1 1/2-2-3 TON

STANDARD HEADROOM
LUG TYPE-R & S

TWIN HOOK MONORAIL
2-PART SINGLE



ALL DIMENSIONS IN INCHES

MODEL NUMBER	CAPACITY (lbs.)	SPEED (fpm)	LIFT (ft.)	REEVING	MOTOR (hp)	A	B	C	D	H	J	L	L'	R	S	T	MAX. HOOK SPACING	MIN. HOOK SPACING	APPROX. WT. (lbs.)	
WD-326S	2000	20	24	2PS-1/4	2 @ 1200	18	20 1/2	36 1/2	40	16	16 3/4	3 3/4	4 1/4	14 3/16	20	2 1/4	108	29	850	R
WD-327S	2000	20	45	2PS-1/4	2 @ 1200	18	20 1/2	49 1/2	53	16	16 3/4	3 3/4	7 1/2	14 3/16	20	2 1/4	108	42	950	
WD-328S	2000	20	66	2PS-1/4	2 @ 1200	18	20 1/2	62 1/2	66	16	16 3/4	3 3/4	11	14 3/16	20	2 1/4	108	55	1050	
WD-320S	2000	30	24	2PS-1/4	3 @ 1800	18	20 1/2	36 1/2	40	16	16 3/4	3 3/4	4 1/4	14 3/16	20	2 1/4	108	29	850	
WD-321S	2000	30	45	2PS-1/4	3 @ 1800	18	20 1/2	49 1/2	53	16	16 3/4	3 3/4	7 1/2	14 3/16	20	2 1/4	108	42	950	
WD-322S	2000	30	66	2PS-1/4	3 @ 1800	18	20 1/2	62 1/2	66	16	16 3/4	3 3/4	11	14 3/16	20	2 1/4	108	55	1050	
WD-323S	2000	40	24	2PS-1/4	4 @ 1800	18	20 1/2	36 1/2	40	16	16 3/4	3 3/4	4 1/4	14 3/16	20	2 1/4	108	29	850	
WD-324S	2000	40	45	2PS-1/4	4 @ 1800	18	20 1/2	49 1/2	53	16	16 3/4	3 3/4	7 1/2	14 3/16	20	2 1/4	108	42	950	
WD-325S	2000	40	66	2PS-1/4	4 @ 1800	18	20 1/2	62 1/2	66	16	16 3/4	3 3/4	11	14 3/16	20	2 1/4	108	55	1050	
WD-330S	3000	20	24	2PS-1/4	3 @ 1200	18	20 1/2	36 1/2	40	16	16 3/4	3 3/4	4 1/4	14 3/16	20	2 1/4	108	29	850	
WD-331S	3000	20	45	2PS-1/4	3 @ 1200	18	20 1/2	49 1/2	53	16	16 3/4	3 3/4	7 1/2	14 3/16	20	2 1/4	108	42	950	
WD-332S	3000	20	66	2PS-1/4	3 @ 1200	18	20 1/2	62 1/2	66	16	16 3/4	3 3/4	11	14 3/16	20	2 1/4	108	55	1050	
WD-333S	3000	30	24	2PS-1/4	5 @ 1800	18	20 1/2	36 1/2	40	16	16 3/4	3 3/4	4 1/4	14 3/16	20	2 1/4	108	29	850	
WD-334S	3000	30	45	2PS-1/4	5 @ 1800	18	20 1/2	49 1/2	53	16	16 3/4	3 3/4	7 1/2	14 3/16	20	2 1/4	108	42	950	
WD-335S	3000	30	66	2PS-1/4	5 @ 1800	18	20 1/2	62 1/2	66	16	16 3/4	3 3/4	11	14 3/16	20	2 1/4	108	55	1050	
WD-336S	3000	40	24	2PS-1/4	6 @ 1800	18	23 1/2	36 1/2	40	16	16 3/4	3 3/4	4 1/4	14 3/16	20	2 1/4	108	29	875	
WD-337S	3000	40	45	2PS-1/4	6 @ 1800	18	23 1/2	49 1/2	53	16	16 3/4	3 3/4	7 1/2	14 3/16	20	2 1/4	108	42	975	
WD-338S	3000	40	66	2PS-1/4	6 @ 1800	18	23 1/2	62 1/2	66	16	16 3/4	3 3/4	11	14 3/16	20	2 1/4	108	55	1075	
WD-340S	4000	20	20	2PS-1/4	4 @ 1200	22	23 1/4	39	42	16 1/2	19 3/8	4	4 1/4	14 1/2	19 1/2	2 1/2	96	31	900	S
WD-341S	4000	20	40	2PS-1/4	4 @ 1200	22	23 1/4	52	55	16 1/2	19 3/8	4	7 1/2	14 1/2	19 1/2	2 1/2	96	44	1000	
WD-342S	4000	20	60	2PS-1/4	4 @ 1200	22	23 1/4	65	68	16 1/2	19 3/8	4	11	14 1/2	19 1/2	2 1/2	96	57	1100	
WD-343S	4000	30	20	2PS-1/4	6 @ 1800	22	23 1/4	39	42	16 1/2	19 3/8	4	4 1/4	14 1/2	19 1/2	2 1/2	96	31	900	
WD-344S	4000	30	40	2PS-1/4	6 @ 1800	22	23 1/4	52	55	16 1/2	19 3/8	4	7 1/2	14 1/2	19 1/2	2 1/2	96	44	1000	
WD-345S	4000	30	60	2PS-1/4	6 @ 1800	22	23 1/4	65	68	16 1/2	19 3/8	4	11	14 1/2	19 1/2	2 1/2	96	57	1100	
WD-360S	6000	20	20	2PS-5/16	6 @ 1200	27	23 1/4	39	42	16 1/2	19 3/8	4	4 1/4	14 1/2	19 1/2	2 1/2	96	31	900	
WD-361S	6000	20	40	2PS-5/16	6 @ 1200	27	23 1/4	52	55	16 1/2	19 3/8	4	7 1/2	14 1/2	19 1/2	2 1/2	96	44	1000	
WD-362S	6000	20	60	2PS-5/16	6 @ 1200	27	23 1/4	65	68	16 1/2	19 3/8	4	11	14 1/2	19 1/2	2 1/2	96	57	1100	

"C" AND "D" DIMENSION AND WEIGHTS BASED ON MIN. HOOK SPACING
NOTE: WHEN USING SCREW TYPE LIMIT SWITCH ADD 1 INCH TO HEADROOM.